

Incoming Goods and Outgoing Goods Control (IG/OG)



Product Summary



Incoming Goods and Outgoing Goods Control

IG/OG Features

- Touchscreen capability for easy data entry
- Compliant with bar code scanning
- User access control prevents unauthorized deletion of data
- Serial number tracking allows inspection results to be assigned to specific parts
- Dynamic sampling allows skip lot inspection and compliance with ISO 2859 and ISO 3951
- Connection to your ERP system allows full integration into your facility
- Master data containing part, supplier, customer, and defect information allows simple defect monitoring
- Automatic complaint and NCMR creation from failed inspections
- Automatic email notification upon inspection completion
- Runs with several types of databases including MS Access, SQL Server, and Oracle
- Configurable security levels help protect your data
- Provides all necessary tools for compliance with ISO, Six Sigma and other quality standards

Click on a screen to see an enlarged image



The IG/OG module is the ideal tool for incoming, outgoing, and in-process inspections. It allows inspections to be performed quickly and effectively with the ability to track inspections in real-time. Defects are detected sooner and actions can occur more quickly to correct problems. The system allows users to analyze defects using Pareto analysis among other techniques. As a result, less effort is needed to perform inspections and track defects yielding lower inspection costs.

Inspection Plan Management

The screenshot shows a software window titled 'QSi Inspection Plan' with a sub-header 'Inspection Plan Management'. It contains several input fields for 'Part No.', 'Drawing', 'Quantity', 'Lot Size', 'Lot No.', and 'Lot Date'. There are also buttons for 'OK', 'Cancel', and 'Help'. Below the form is a table with columns for 'Part No.', 'Drawing', 'Quantity', 'Lot Size', 'Lot No.', and 'Lot Date'. The table contains several rows of data.

Data Collection

The screenshot shows a software window titled 'QSi Inspection Plan' with a sub-header 'Data Collection'. It contains a table with columns for 'Part No.', 'Drawing', 'Quantity', 'Lot Size', 'Lot No.', and 'Lot Date'. The table contains several rows of data. There are also buttons for 'OK', 'Cancel', and 'Help'.

What is the QSi IG/OG module?

The IG/OG module allows users to perform inspections, record data, pass or fail inspections, and print inspection reports. The supplier information, part numbers and serial numbers are included in each inspection to simplify defect monitoring. Dynamic sampling allows skip lot inspection and different inspection levels based on ISO standards. The system also provides a user friendly environment for data entry that allows inspectors to focus on inspection rather than data entry. The integrated simple inspection plan creation, dynamic sampling, defect monitoring and extensive analysis tools combine to create a powerful inspection system.

How does the QSi IG/OG module work?

Inspection plans are created using the inspection plan module (IPM) shown above. Standard inspection plans can also be used as templates to create new, specific inspection plans for other parts.

Once the plan is created, the inspection order is created with the number of parts in the batch. The inspectors then choose the proper inspection from the list of inspections available to them.

IG/OG Features

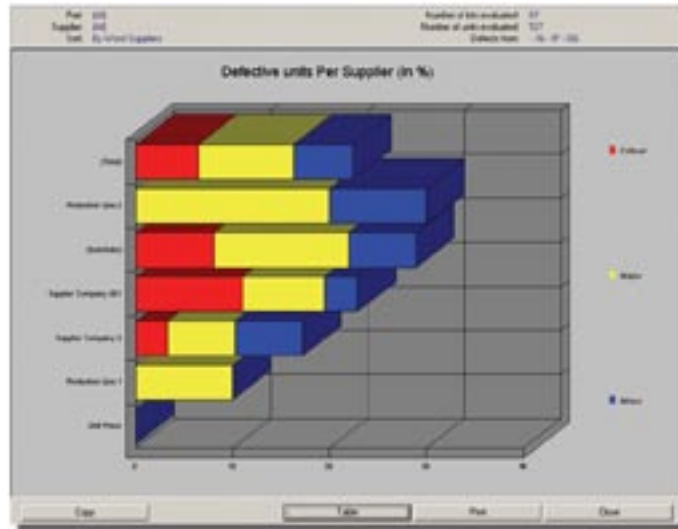
- Configurable management reports to expedite decisions
- Priority analysis allows users to analyze data quickly
- Supplier assessment rates suppliers based on defects, delivery reliability, volume, and costs
- Defect monitoring allows users to analyze costs and prevent repetitive errors
- Configurable searching allows users to analyze data based on any variable of interest
- Saved searches allow users to access desired data by pressing a single button
- Status reports available for all inspections
- Create standard inspection plans for groups of products or specific inspection plans for each product
- Choose characteristics and defects from a list or create new items when needed

If an inspection is overdue, the system will warn the operator by highlighting the section in red as shown in the figure on page one. Once the inspection is complete, the user has an opportunity to analyze the data and monitor defects with several analysis tools.

How can the QSi: IG/OG module help you?

The integrated inspection planning, data collection, and data analysis system places all inspection information in one location. The result is a system that provides real-time information about your process and helps you make more informed decisions more quickly to improve your process. You will spend less time analyzing and collecting data resulting in lowered inspection costs.

Defect Monitoring



Supplier Comparison

In-Depth Analysis Tools



IBS America, Inc.
125 Hartwell Avenue
Lexington, MA 02421
Tel: 781.862.9002
Fax: 781.862.9003
Email: info@ibs-us.com
Internet: http://www.ibs-us.com

QSi · Edit Inspection Plan X

Insp. Plan Type: Incoming Inspections

Plan ID: RM-002 New Version info:

Status: Release Typ: IG

Use: Inspection plan Version: 1

Process pos.: Additional Data ...

Part No.: RM-002 Part Des.: RM-002

Drawing: Dwg. Index:

Operation: Op. Group:

Supplier ID: Supplier:

Customer ID: Customer:

Client: --- (---) Sub-Client: --- (---)

Characteristics

No.	ID No.	Characteristic	Group	Type	Status
▶ 10	Var-001	Length	Variable	Variable	Release
▶ 20	Var-002	Height	Variable	Variable	Release
▶ 30	Var-003	Width	Variable	Variable	Release
▶ 40	Var-004	Inner Diameter	Variable	Variable	Release

Inspection Plan Management

Return to Data Sheet

QSI - Inspection Module - (Registered to IPS America - Test) - [Monitoring]

File Options Control Help

Inspection list (Incoming Inspections)

QSI - Inspect characteristics

Insp. Char. ID: Var-001 Insp. Char. Des.: Length

Order No.: **RM-003** Part No.: **RM-003**
 Supplier: Part des.: **RM-003**

Gage: _____ USL _____
 Gage Conn.: Keyboard Nominal _____
 LSL to USL: 9.0000 ... 11.0000 inches LSL _____
 Nom. dim.: 10.0000 inches

Last value: --

9.987

(1 piece from 5) Indefinite

W	No	IP_pos	ID No.	Insp.	n	Defect	Result	Type	S
	1	10	Var-001	0	5	0	--	Var	5
	2	20	Var-004	0	5	0	--	Var	
	3	30	Var-002	0	5	0	--	Var	
	4	40	Var-003	0	5	0	--	Var	
	5	50	Var-005	0	5	0	--	Var	
	6	60	Att-001	0	5	0	--	Att	
	7	70	Att-002	0	5	0	--	Att	
	8	80	Att-003	0	5	0	--	Att	
	9	90	Att-004	0	5	0	--	Att	
	10	100	Att-005	0	5	0	--	Att	

Inspection

F8 - Special Insp.

F2 Notes

F4 Statistics

F10 Scan

F5 Picture

F6 Info

ESC Back
F1 - Help

SINIC-CAQ System 1/4/2005 Demo

Data Collection

Return to Data Sheet

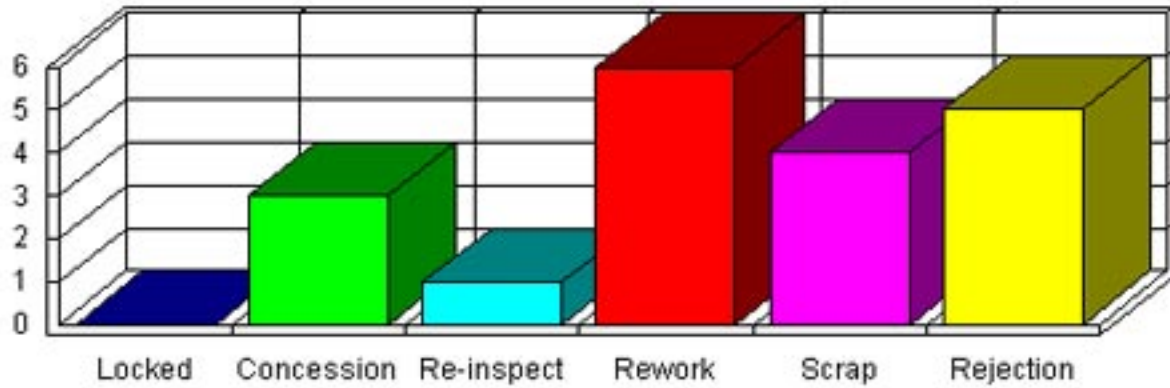
Order No.: (All)

Period: 1/5/2003 To 1/4/2005

Part No.: (All)

46 IG-Inspections

Special decisions (IG)



Total: 19 Special decisions

Decision	Inspections	Fraction Defective	Special fraction
Locked	0	0.00 %	0.00 %
Concession	3	6.52 %	15.79 %
Re-inspect	1	2.17 %	5.26 %
Rework	6	13.04 %	31.58 %
Scrap	4	8.70 %	21.05 %
Rejection	5	10.87 %	26.32 %

[Click a bar for details!](#)

[Copy Graph](#)

[Copy Table](#)

[Print](#)

[Exit](#)

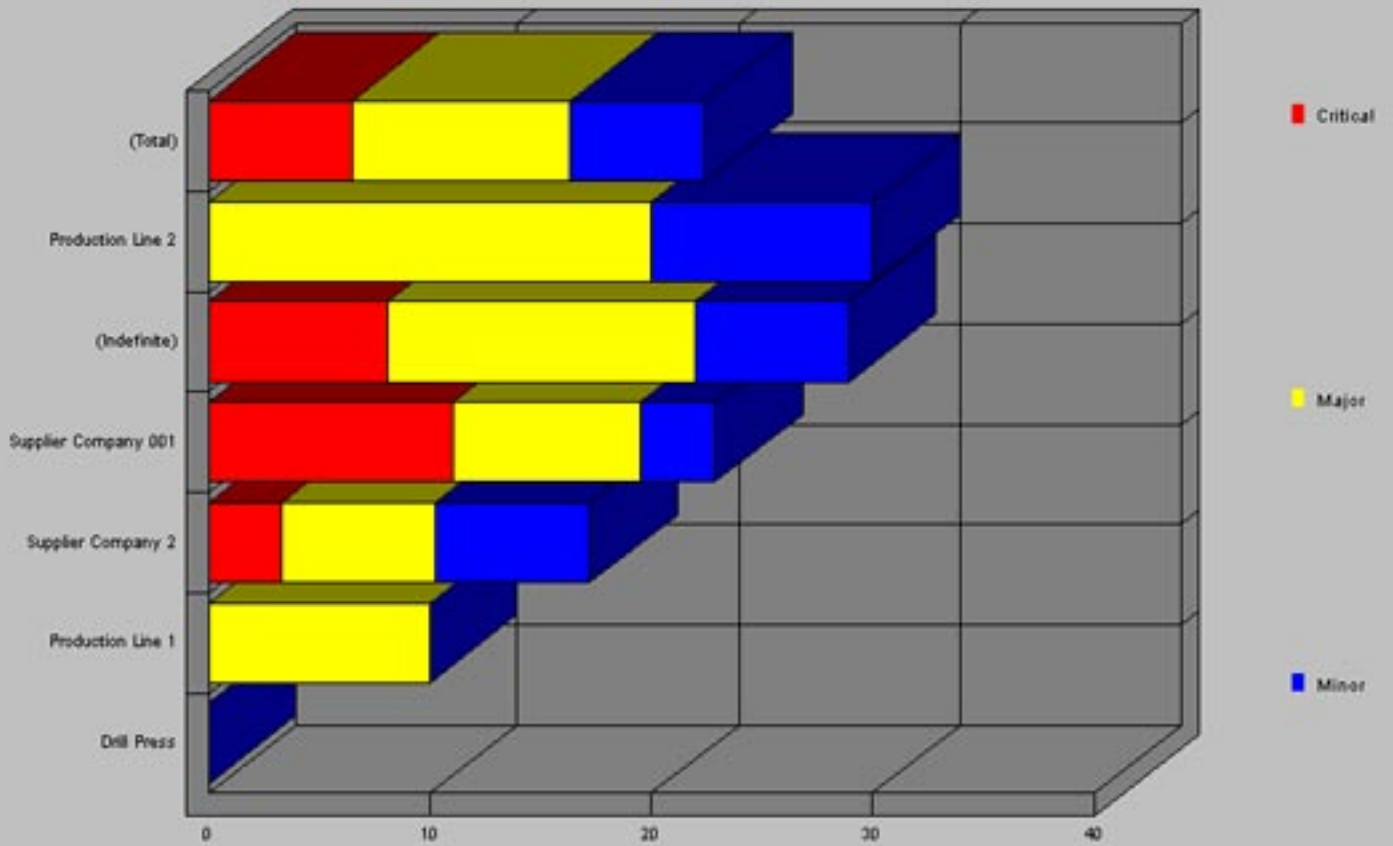
Defect Monitoring

[Return to Data Sheet](#)

Part: [All]
Supplier: [All]
Sort: By Worst Suppliers

Number of lots evaluated: 67
Number of units evaluated: 527
Defects from: -IG - IP - OG

Defective units Per Supplier (In %)



Copy

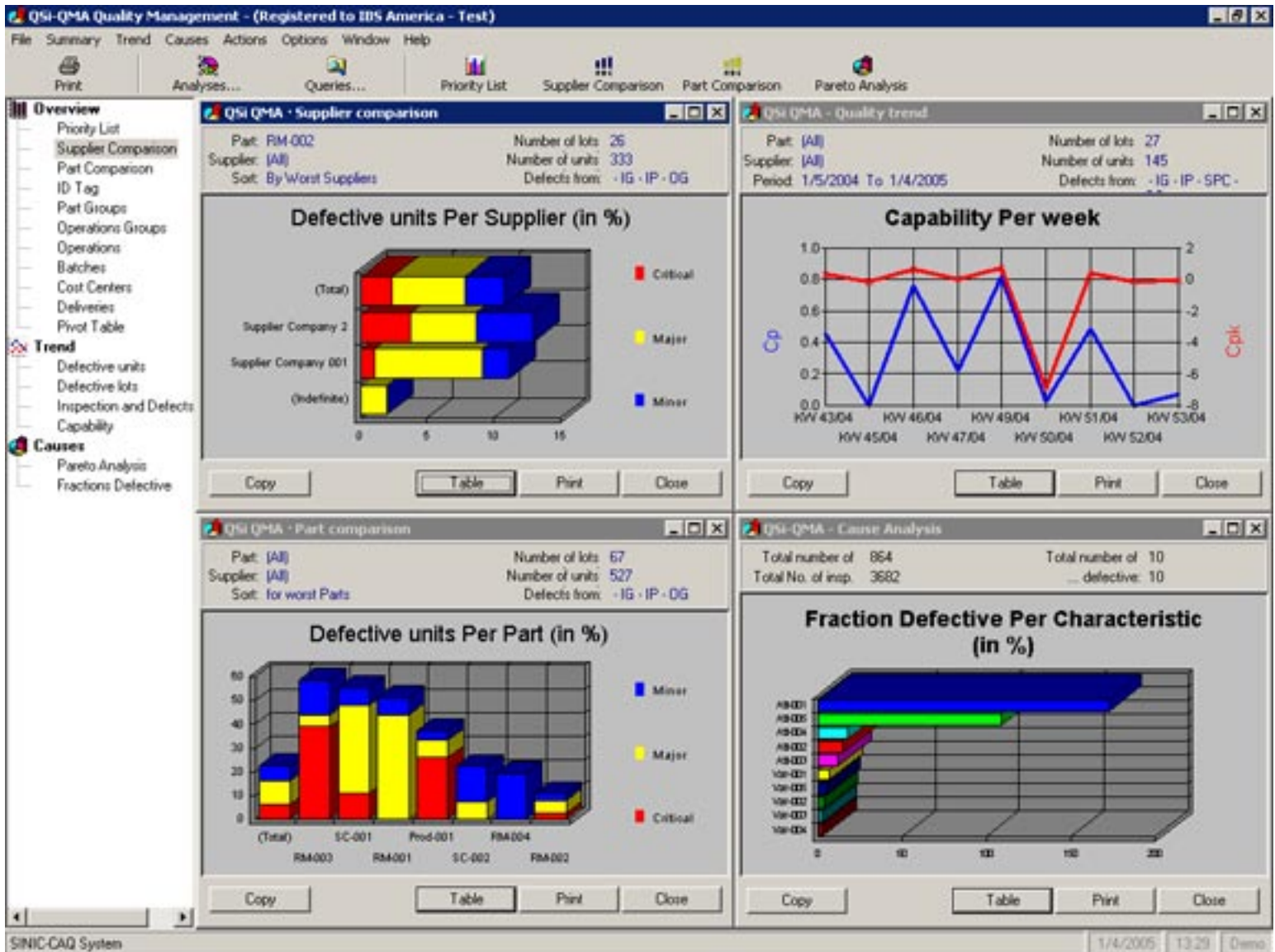
Table

Print

Close

Supplier Comparison

[Return to Data Sheet](#)



In-Depth Analysis Tools

[Return to Data Sheet](#)